

CITY OF NOME

PROPOSED 3D HOUSING PLAN

Glenn Steckman

City of Nome



Lot location

Latitude:
64°30'06.9"N

Longitude:
165°24'48.2"
W





House for 3D printing in PAC



Studio

1-bedroom

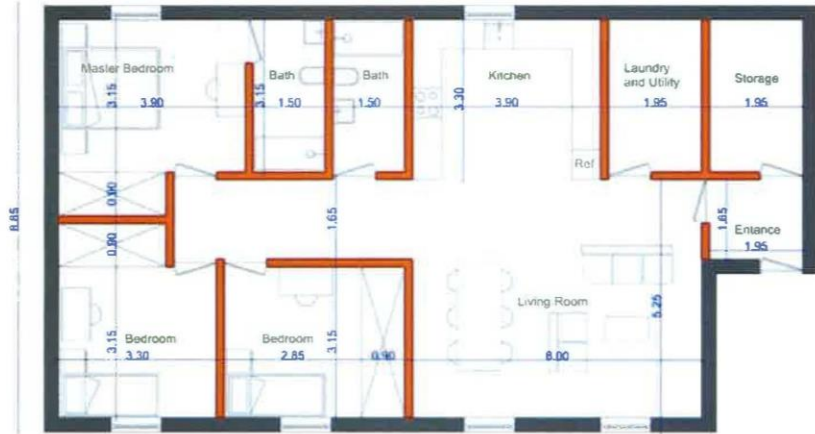
2-bedroom

3-bedroom

3-bedroom +
garage

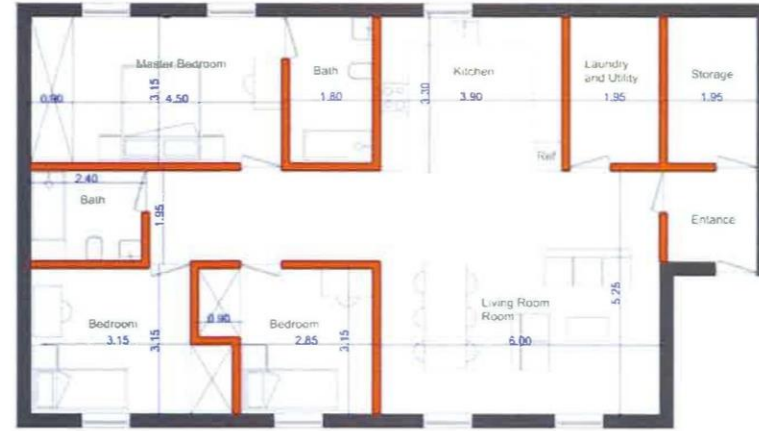


Type A



3 BED FLOOR PLAN

Type A'



3 BED FLOOR PLAN

Type B

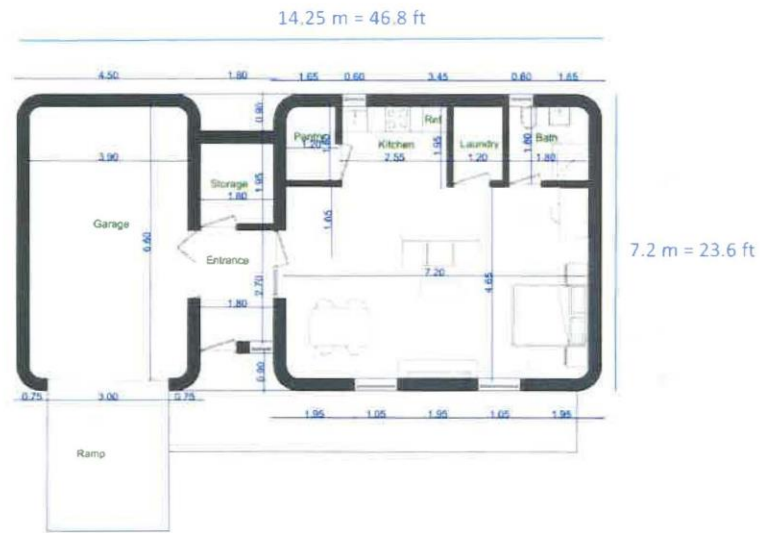
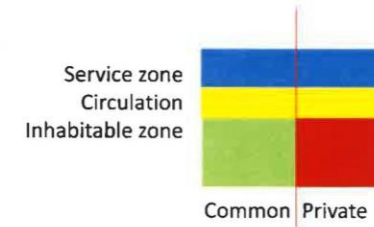


Type B'

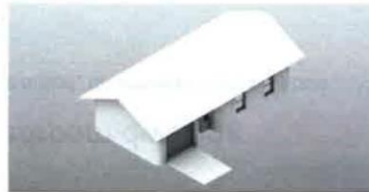


Type C - studio

Note: Unless otherwise noted, dimensions are in meters



with garage

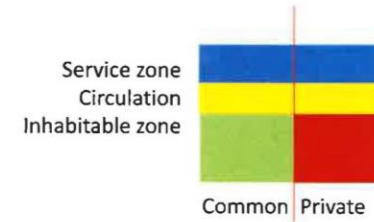


without garage



Type C – two-bedroom dwelling

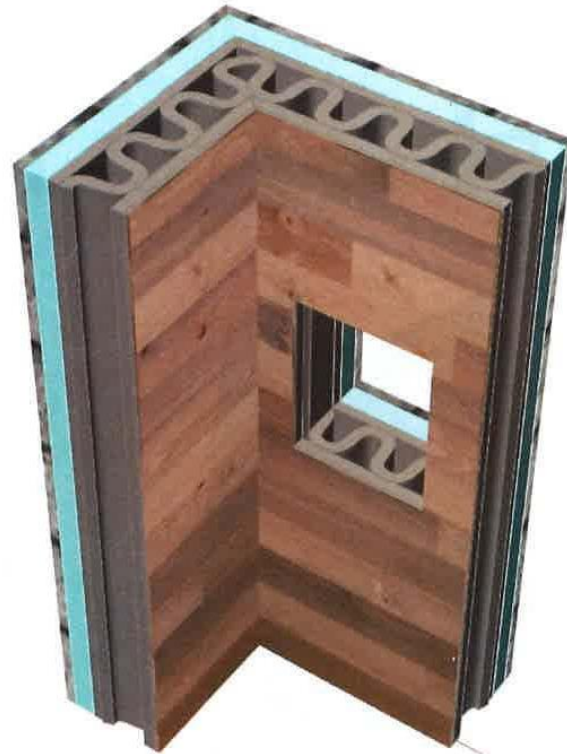
Note: Unless otherwise noted, dimensions are in meters



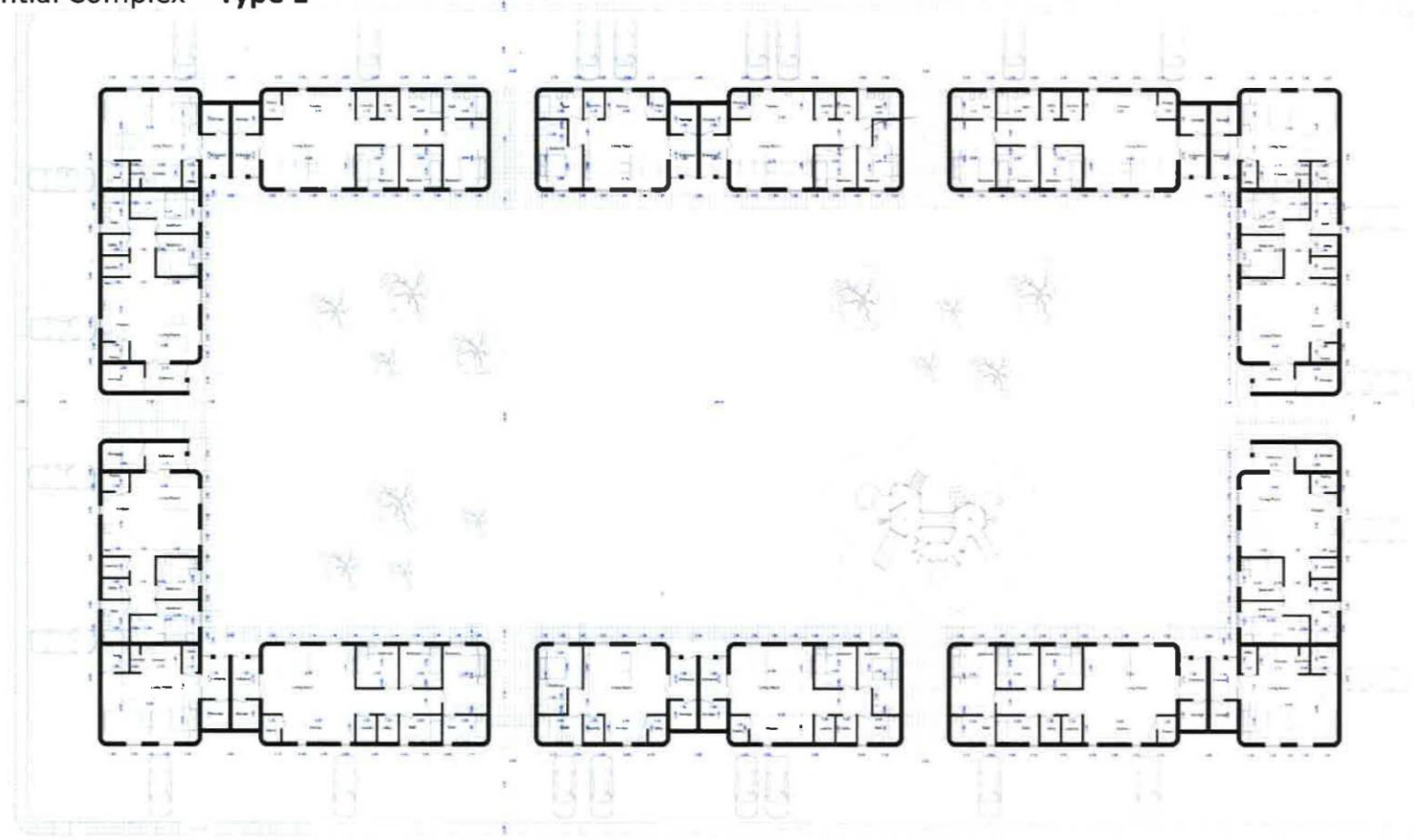
7.2 m = 23.6 ft



Openings



Residential Complex – **Type 1**



Note: dimensions of the passageway were adjusted to accommodate cars parking