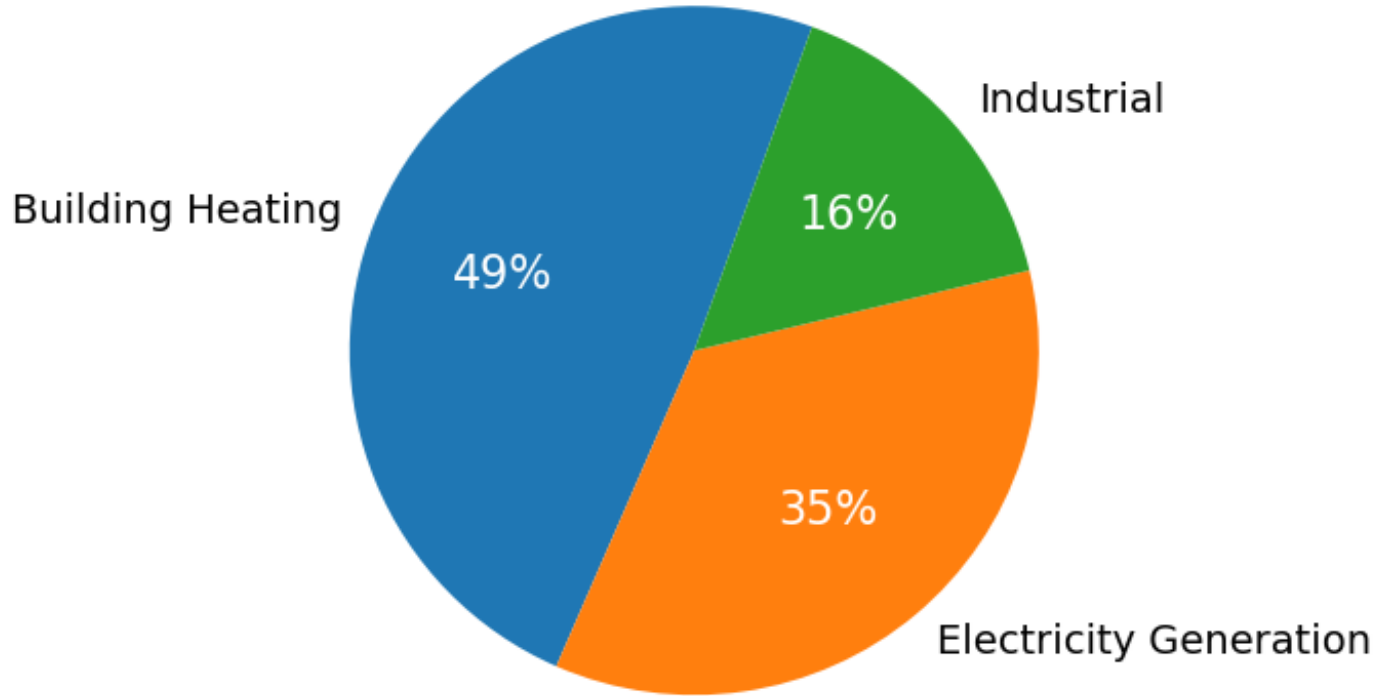


Cook Inlet Natural Gas Use, 2022-23 Average

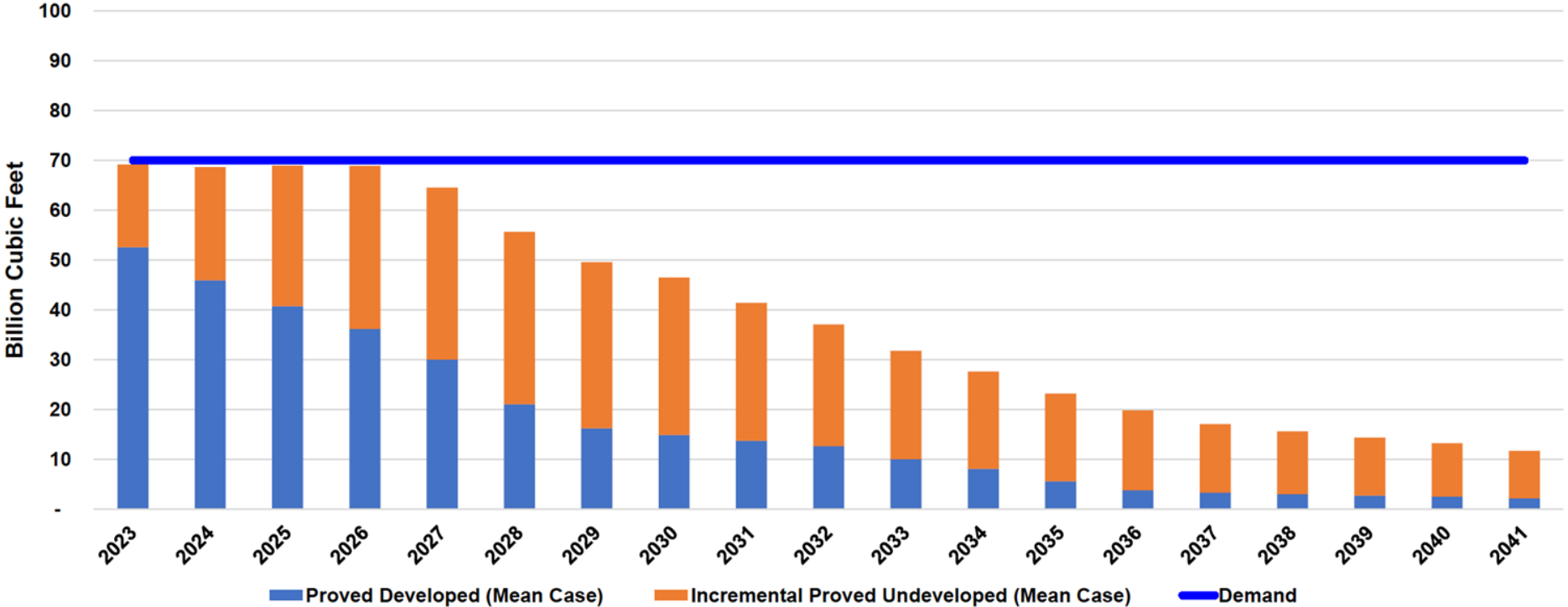


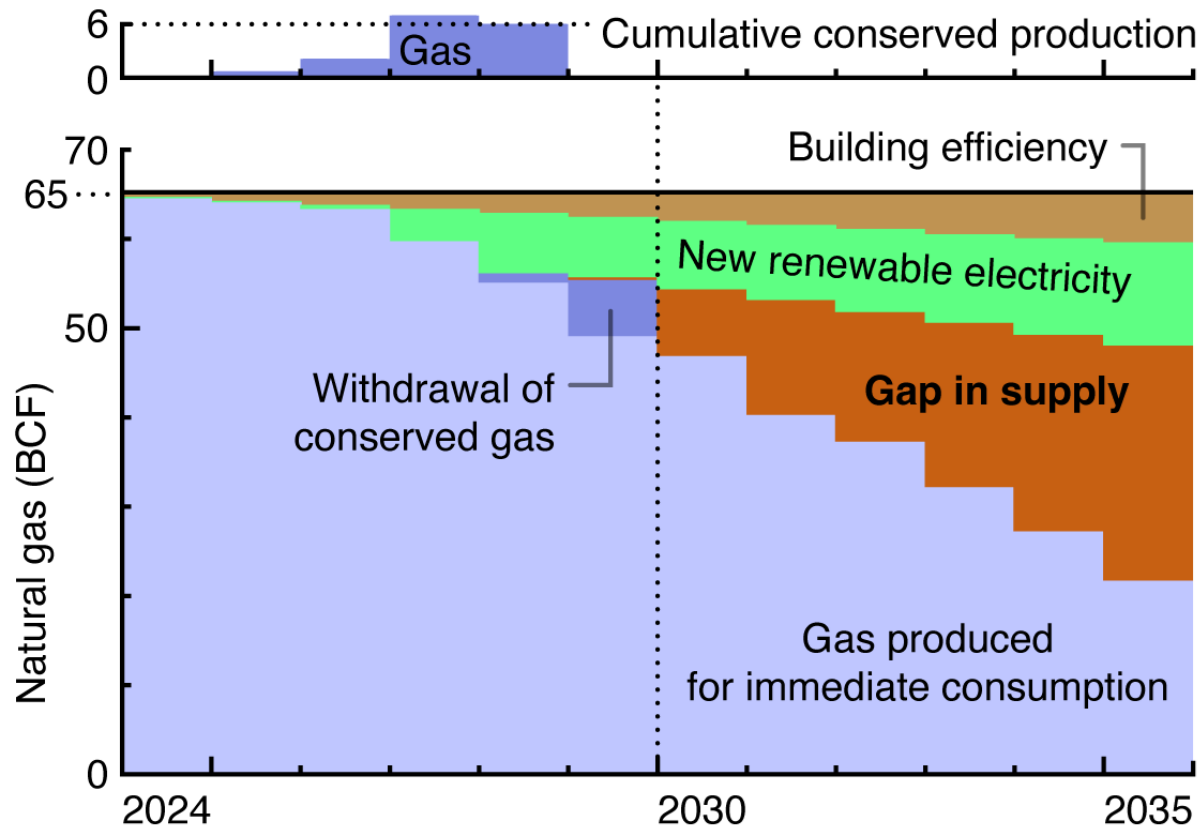
CO2 emissions: Roughly 3.8 million metric tons per year

DNR's 2022 Cook Inlet Forecast



Cook Inlet Gas
Proved Developed & Proved Undeveloped (Truncated Mean Case)





CO2 emissions savings: Roughly 5.8 million metric tons from 2024-35

Cost savings: Over \$800 million

Policy Levers

State Level:

- Renewable Energy Fund
- Tax Policy
- Wheeling Fees
- Green Bank
- Weatherization/Energy Rebate

Municipal/Borough/Tribe Level:

- Distributed Energy
- Tax Policy
- PACE programs
- Building Efficiency
- Heat Pumps